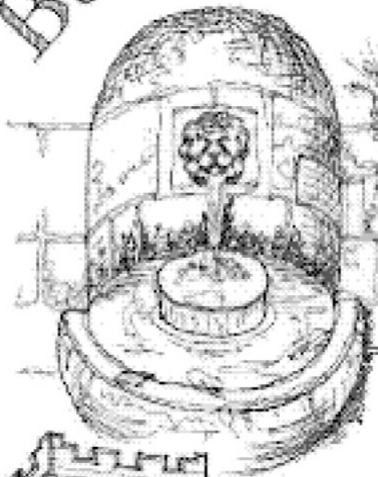
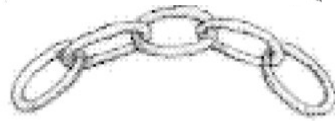


Burton

Hoton

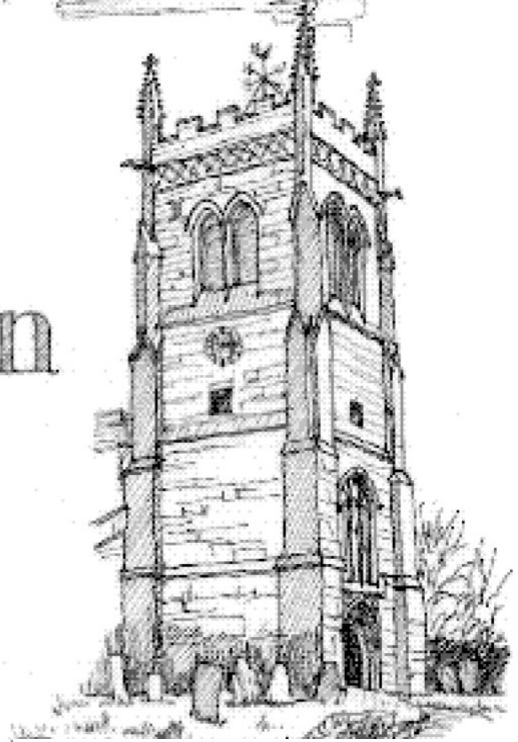
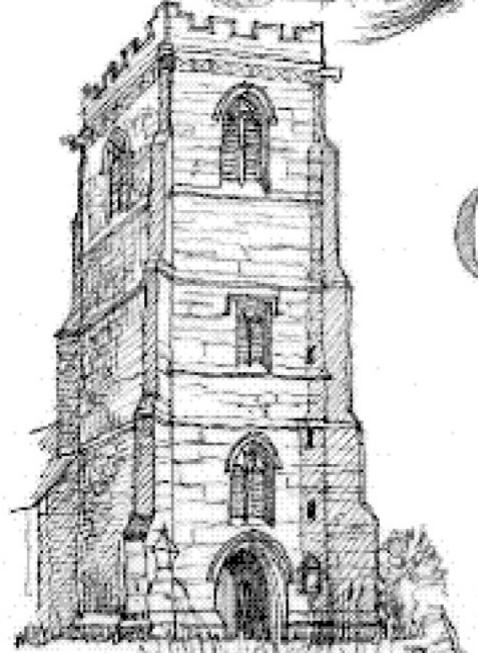


Walton



# Christian LINK

June  
2020



Wymeswold



Prestwold

Cotes

Church, Community and Parish News for the villages of  
Wymeswold, Burton on the Wolds, Hoton, Cotes, Prestwold and Walton on the Wolds.



# dirty oven...?

don't worry... help is at hand



**Spectacular results in around 3 hours**



**Removal of all traces of grease, fat and other nasty built up layers from ovens, hobs, extractors or microwaves**



**No aerosols, no mess, no fuss, caustic free**



**We also supply bulbs, seals and extractor filters**

**oven** tel 01664 851627

oven valeting service www.oven.co.uk

43 Mill Street, Melton Mowbray



Vivienne Isaac FwSS tESA(P)

SHIATSU

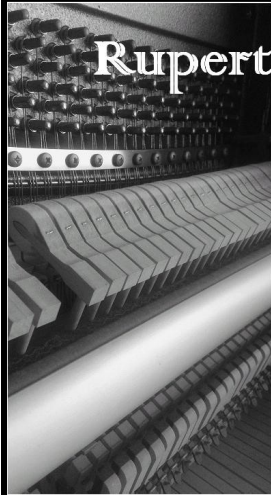
For Humans & Horses

Bad back? Neck ache? Stiff shoulders? Sore knees? Low mood?

Shiatsu relieves joint and muscle pain, adjusts structural misalignments and releases tension. It reduces mental, emotional and physical stress, and helps with breathing difficulties, digestive disorders and depression.

Shiatsu is a gentle, effective therapy which aids well-being, enhances energy and improves balance by using finger pressure, fascial unwinding, rotations, stretches and muscle energy techniques.

[vivienne.isaac652@btinternet.com](mailto:vivienne.isaac652@btinternet.com)  
07947 075301 01509 880652



**Rupert J. Taylor** NTC DIP C.G.L.I.

**Piano Tuning  
& Repairs**

1 East Road  
Wymeswold  
Leicestershire  
LE12 6ST

Home 01509 767848  
Mobile 0774 8201584  
[ultimatetension@gmail.com](mailto:ultimatetension@gmail.com)

**Established 1990**



**MS Roofing & Property Services**

Roofing - Patios - Fencing - Building Works - Driveways - Walling

Drive & Patio Cleaning - Ponds - Gates - Bespoke Sheds -

Most Home/Garden Works

Martin Steel - Burton on the Wolds

m: 07779 102 480 e: [martin.steel@msrps.co.uk](mailto:martin.steel@msrps.co.uk)

[www.msrps.co.uk](http://www.msrps.co.uk)

**B.G.I.S Ltd**



**BATHROOMS  
AND EN-SUITES.**

**An all-in service from  
start to finish.**

**Plumbing, plastering,  
tiling, electrical work.**

**We fit customer's items or we can supply all  
items for full bathroom suites.**

**FULLY INSURED**

**Highest standards of work with many  
satisfied customers in local villages.**

**CONTACT: Chris Henman**  
23 Souters Lane, Burton on the Wolds  
Tel: 01509 881713  
Mobile: 07944 798588

B.G.I.S LTD Registered in England and Wales No.4519989

**Muck and Magic**  
*Garden Maintenance Services*



**Specialising in Organic Gardening**  
RHS General Certificate

**Any job considered • OAP Concessions**  
Free Estimates • Locally Based

Ring Andy Bartlett on  
**01509 852998 or 07891 179382**  
email: [andy-bartlett@hotmail.com](mailto:andy-bartlett@hotmail.com)

**PLEASE SUPPORT THE ADVERTISERS**

# The Christian *Link*

Dear All,

As I sit down to write this we have just celebrated VE Day 75, with social distancing, we are awaiting news on the future plans for relaxing lock-down, and are continuing to pray for all infected with and affected by this pandemic, hoping and praying that we may be coming out of the worst of this virus. Our church services continue using Zoom, Facebook and our website ([barrowandwoldsgroup.com](http://barrowandwoldsgroup.com)) and we are finding new ways to hold social events and meet with one another.

When I was at college, someone had printed out the words of Psalm 73:16, and put little cards into many of the books or just tucked away on the shelves in the library. It reads **"Then thought I to understand this, but it was too hard for me"** It felt very true at the time but I did manage to understand in the end and I gained a BA in Theology. Now I often remember that quote when something feels very hard or I just don't understand, and I am reminded that with God nothing is too difficult. I don't profess to understand how or when our churches should re-open, nor how this country should proceed with lock down, protecting the NHS, keeping us all safe and also stimulating the economy, nor do I have any idea how things will have changed by the time you come to read this. But I do know that we can do none of this without God. This current crisis is too difficult to understand, but with God we can and will come through this. As Matthew 19:26 says, **"Jesus looked at them and said, 'With man this is impossible, but with God all things are possible.'"**

In these strange times I am frequently reminded of St. Paul's words to the church in Rome. **"For I am convinced that neither death nor life, neither angels nor demons, neither the present nor the future, nor any powers, neither height nor depth, nor anything else in all creation, will be able to separate us from the love of God that is in Christ Jesus our Lord."** As we are separated from one another, from family and friends, from our churches, and from the people and places we love, we are reminded that nothing can separate us from the love of God, not even COVID 19. That is a promise I hold

## *What's in this Christian Link?*

Pages 3-5	Church News
Pages 6-8	Wymeswold News
Pages 9-11	News from Burton, Hoton, Cotes and Prestwold
Pages 12-13	VE day Celebrations in the Wolds
Page 14-16	General news
Page 17	Diary Dates

on to during these troubled times, that no matter what we are separated from, we can never be separated from the love of God in Christ Jesus. As I write this, Christian Aid Week is just beginning and Christian Aid have selected these words from Romans for Christian Aid Week 2020, and have published this prayer, which expresses that thought so well...

**God of heaven and earth,  
in these times of isolation,  
apart from loved ones  
distant from friends  
away from neighbours  
thank you that there is nothing  
in all of creation,  
not even coronavirus,  
that is able to separate us from your love.  
Amen**

I pray that God may continue to richly bless us all during these difficult times, and that we may know that with him all things are possible, and we will never be separated from his love for us.

*Every blessing,  
Rev Clive*

## **Hire Walton on the Wolds Village Hall**

Phone  
Ian McMillan 01509 880577  
Or Liz Keogh 01509 881740



**BUILDERS  
WYMESWOLD**

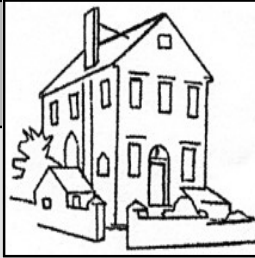
All aspects of building & maintenance undertaken  
**Pointing Specialists**

for a free estimate  
**T: 01509 889351 M: 07887 774377  
07403 676427**



# Church News

## Methodist News



I am writing this in early May with lockdown continuing for a few more weeks. We have had a lovely April, the sunshine may not have been as good for the final few days as we had during the rest of the month but the good weather has certainly helped us through our confinement.

During May we had planned several things, including to offer Experience Pentecost to the village school again. We were disappointed that due to Covid 19, we were not able to do this so decided to have a rethink. How could we continue to offer something, which we all enjoy taking part in, but still keep to the guidance the government has given us. After some thought we decided the answer lay in sharing the Experience Journey for Pentecost with a wider audience via our new noticeboard. Whilst preparing the information to be displayed each week. I came across the phrase "Wayside Pulpit". I have to say, our wayside pulpit, which is how I like to think of our noticeboard, has been very active. I do hope that you have found some of the things we have been displaying informative, thought provoking and fun, our aim has been to try to offer a positive message during these uncertain times.

We are unsure for how much longer the restrictions will apply, but rest assured once there is an easing, we will resume with our usual enthusiasm, the coffee mornings, and some social activities, as well as our worship. If you have found yourself enjoying what we have provided, but have not had the courage to come and join us before, please know that we offer a warm and friendly welcome to all.

Margaret Folwell



## News from St Mary's



I am writing this news on the day the Prime Minister is about to announce the way in which the Government believes this country can be safely moved to the next stage in dealing with the pandemic. Times are ever changing, and I am conscious that the news of today could indeed be very different to the news in June. Please be assured that we will always do our very best to keep you up to date with anything new via the Barrow and Wolds Group website, social media, email and telephone (if this is what you have requested).

There were many plans made as to how we were to celebrate VE Day as a village. Those plans had to change but the celebrations continued... in our front rooms, gardens, streets, and cul-de-sacs. The village looked and sounded as vibrant as ever.

On the morning of [VE day](#), an announcement was made via the village Facebook pages and various email groups from the churchwarden at St. Mary's,

*"The Bishops of Leicester and Loughborough have written to incumbents to update the advice regarding the closure of church buildings. They have advised that a single bell may be rung for special events, including VE day.*

*Therefore, one of St. Mary's bells will be rung at 7PM (in accordance with the original Government request) to mark VE day.*

And as this goes to press the following statement is still true...

*"The Bishops advise that church buildings will remain closed to all except clergy and designated people until further notice."*

There was also a VE75 service which is still available for you to view via the Barrow and Wolds Group website or Facebook. Links to which can be found below.

Whilst the church building may be closed, services, prayer groups and social events are still taking place. We are just accessing them differently. We can still hear the church bells ring to herald the start of Sunday morning worship - You may be interested to know that the bells which ring at the beginning of each of the virtual Sunday services is a recording of a quarter peel rung at St. Mary's in February. We still have music, songs, and prayer as well as an opportunity to see familiar faces and have a chat.

## News Items and Adverts for next issue

**Deadline date for the July/August issue is Friday 12th June.**

**Items submitted after the Deadline Date may not be included in the Link.**

Please send *News Items, Articles or Social Adverts* to **Jenny Bokor** at 3, Rectory Place, Wymeswold.

Tel: 881428, E-mail: [jennybp54@aol.com](mailto:jennybp54@aol.com)

Please send *Commercial Adverts* to **Chris Keeling** at 9, The Stockwell, Wymeswold.

Tel 880515, E-mail: [chriskeeling38@gmail.com](mailto:chriskeeling38@gmail.com)

Please note all Commercial Adverts should be sent in JPEG Format whenever possible, otherwise it causes a lot of work so *we may need to charge for the time spent creating them.*

Apologies, but we *cannot distribute any additional material* with the Christian Link, e.g. flyers.



For those of you who may not yet have joined us for a Zoom church service, which are live on Sunday mornings at 10:30, then the following links may be useful to you,

<http://www.barrowandwoldsgroup.com>

This website has details about church services and recordings of Sunday worship. You can also see these services by logging onto <https://www.facebook.com/revdclive.barrowwolds>

If you would like to contact Clive personally then he may be contacted via his email address [rev.clive.watts@barrowandwoldsgroup.com](mailto:rev.clive.watts@barrowandwoldsgroup.com) or you may telephone him on 07534 899522

Alternatively, you may wish to be added to St. Mary's email list, here in Wymeswold. In that case please email Stephen Critchley at [stephen.r.critchley@btinternet.com](mailto:stephen.r.critchley@btinternet.com) and he will happily add you to the list.

At this point I would like to thank Jez from Barrow on Soar who has been a fantastic help to all those who are broadening their knowledge of using the internet. There are many people 'upskilling' in one way or another at the moment!

We have also had the opportunity to enjoy some social activities as a Group of Churches which have so far included, a bingo night and a VE day quiz. Both events were very well attended, in a virtual sense of course! And I know that there are plans to hold similar events in the future.

We are mindful that not all our service attendees and Link News readers have access to the internet and if this is the case for you or for anyone you know then do please let us know and we will do our utmost to ensure that you are kept up to date via more traditional methods.

We are all currently placing trust in those who lead us and those who are making decisions on our behalf. The Christian faith leads us to trust in God and we pray that we will all, no matter our role or who we are, be guided towards making good choices, not just for ourselves, but for whoever places trust in us. We are thankful for Clive's ministry and leadership. He is continuing to work tirelessly, behind the scenes and in front of the screens. He is producing materials for the school here in Wymeswold as well as in Barrow upon Soar and Burton on the Wolds. His work with the bereaved, those who are in isolation or who may feel isolated goes on whilst he continues to hold regular leadership meetings with the churchwardens and readers across the Group of churches and prepare materials for worship at home and Sunday services.

*Julie Henshaw*

## News from St Andrew's



In these worrying times, when contact with others and prayer is so important, Reverend Clive has excelled by keeping in touch with us using the internet. Church news and services can be accessed in the following ways –

You can join in on the Sunday services at 10.30 a.m. on Zoom - <https://us02web.zoom.us/j/82369549569>

Or if you would prefer, download the services from the web page on [www.barrowandwoldsgroup.com](http://www.barrowandwoldsgroup.com) and you can then

use this at any other time that suits.

Alternatively, if facebook is your preference <https://www.facebook.com/revdclive.barrowwolds>.

Thank you so much for doing this Reverend Clive. It is very much appreciated. For many of us, you are introducing us to the new world of communication and we are enjoying it. It is great to see that the numbers joining in on the services and also on the various social activities are increasing quite substantially each week. The VE Day 75 service was wonderful particularly for those of us who were either there or had relatives involved during those dreadful days. It made the day feel very special indeed.

The annual plant sale which is normally held in May is obviously not going to take place this year. However, we have an alternative plan because, obviously, our keen gardeners have been growing plants since January; all in preparation for our Sunday afternoon Cream teas and plant sale.

The plants will now be on sale during May in the poly tunnel outside Melanie's home for you to go and browse, select and then leave payment for any you take without having to come into contact with anyone else. The address is 325 East Leake Road, Gotham, Nottingham NG11 0LE on the main road from East Leake to Gotham. I know that by the time this publication is produced it will be towards the end of May but it will still be a nice drive out if nothing else, especially if the weather is good. (sorry, no cream teas!).

Apart from thanking Reverend Clive and notice of the sale of plants there is not a lot to report this month. Hopefully with our prayers and vigilance this virus will be conquered and we can then enjoy the freedom we cherish.

God bless and stay safe.

*Adena Hecks.*

Nails by

*fiona*

- . Manicures
- . Pedicures
- . Nail Extensions
- . Tidy & Polish

All these treatments in the comfort of your own home by a qualified nail technician

For more information please call Fiona on

**0779 6793913**

## Christian Link

To advertise contact **Chris Keeling**  
9, The Stockwell, Wymeswold. Tel 880515.

Thanks to **Liz Gray** for desktop publishing.

Thanks to **Gill Keeling** for proof reading this issue.

Thanks to **Susan Crinage** for the original cover design and to **Penny Samuelson** for ongoing artwork.

# HANWELL WINE ESTATE

Award-winning English Wine from three generations of local wine-makers



- ◆ English sparkling wine
- ◆ Vineyard tours & wine tasting
- ◆ Gift vouchers
- ◆ Corporate hire
- ◆ Rural skills workshops
- ◆ Reopening for wine sales from 1-4pm on Saturdays as soon as possible.

Hanwell Wine Estate, Hickling Pastures, LE14 3QG  
01949 81393 info@HanwellWine.co.uk  
www.HanwellWine.co.uk

## BnR Property Services A complete property management solution

**REPAIRS & MAINTENANCE SERVICE**  
Basic Maintenance | General Gardening | Waste Disposal | Fence Repairs & Replacements  
Decorating | Plumbing | Landscaping | Electrical Building | Joinery | Plastering | Roofing

[www.bnrpropertyservices.co.uk](http://www.bnrpropertyservices.co.uk)

### MAN WITH A VAN SERVICE

Single Items to a Full House Move  
Domestic & Business Moves



[www.manwithavanloughborough.co.uk](http://www.manwithavanloughborough.co.uk)

TRAINED • QUALIFIED • INSURED • DBS CHECKED

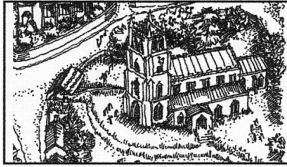
01509 276535 | 07534 849950  
repairs@bnrpropertyservices.co.uk

Great for a summer children's party

## HIRE THE SPORTS PAVILION

at Towles Field, Burton on the Wolds

Phone Pam Harrison 01509 880058



# Wymeswold News

## East Midlands Ambulance Service Wolds Community First Responders



Your local CFR team are still active in many ways.

Although most of us are 'grounded' we still have a CFR on duty from our team working on the front line. We have been returning some of our kit and drugs to the front line.

We have been doing other work with East Midlands Ambulance Service but this has been very limited to admin, stock checking, some retraining etc.

We are still maintaining the Wymeswold Defibrillators and checking them each month so that they are always ready for service.

Our good news is that we have five new recruits going through the recruitment process. This will mean that we will soon be able to provide greater cover for our area.

(Registered Charity Number: 1182197)

Peter  
EMAS CFR Group Coordinator  
(01509 889692)  
(07718251502)

## Wymeswold Church of England Primary School

Dream and Believe, Learn and Achieve

You should all be proud of our Head Teacher, the teaching staff and the support staff for keeping the school functioning for key workers children on the school site as well as providing excellent distance teaching and fun material to the children at home.

We continue to pray for with the children, parents and carers and families at this time.

The children have produced a Newsletter with challenges and photographs. There were lots of Duck photographs. All the children are working really hard.

The sad thing is that all the school trips have had to be cancelled.

However, we remain positive and ready to open the school when we can. Plans are in place now in case we can open up in September.

We thank Mrs Scallon and all the staff for their brilliant commitment in keeping it going.

We recognise that major disruptions are taking place and a lot of pressure is being put onto both parents and schools staff.



We wish everyone well and pray that you are all safe and we look forward to a great welcome back school celebration when advised we can safely reopen.

*Peter Blount  
Co Chair of Governors*

## CAROLE LYALL, WYMESWOLD

Kevan, Eunice & family would like to thank everyone for their kindness, support and messages received on the sad loss of Carole.

Carole had lived in the village all her life and many would have known her through her work at the school and the village Post Office. Carole always had a kind word and a lovely smile.

A celebration of Carole's life will take place at a later date. Many thanks to Kris Morrison Cooper and staff for their compassion and kindness shown during this sad time.

*Kevan and Eunice*

## Wymeswold Parish Council



Dear All,

**Due to the outbreak of Covid-19, the Parish Council were not able to meet in person as we would usually do. However, Government legislation does now permit us to meet virtually. The first virtual meeting of the Parish Council was held on the evening of Monday 4<sup>th</sup> May. The next Parish Council meeting, Parish Meeting and Annual Parish Meeting are also all scheduled to take place virtually via Zoom on Monday 1<sup>st</sup> June. Details of how to attend will be posted on the village noticeboard in due course.**

### Covid-19 and Social Distancing Measures

During this period of lockdown, please note that the play areas and gym equipment in the village remain closed and in line with the Government advice, it is not permitted to use them under any circumstances.

The open spaces do however remain open for people to use as part of their permitted daily exercise.

### Wymeswold Community Volunteers

Almost 50 individuals have now volunteered for an initiative to help residents of Wymeswold who at this time, find themselves isolated and in need of help and support. The volunteers can help with gathering urgent supplies of groceries of medicine, dog walking, posting mail, or even just a friendly chat on the phone.

You can contact the group by emailing [wymeswoldhelp@gmail.com](mailto:wymeswoldhelp@gmail.com) or by calling 07904 518 410. They also have Facebook page called Wymeswold In Need which you can also use to contact them.

### Police Reports

During the month of April 2020 Wymeswold had no reported instances of crime.

Please do continue to report any suspicious activity in the village on 101 or email our neighbourhood watch – [garryandangleboorman26@gmail.com](mailto:garryandangleboorman26@gmail.com)

### Cemetery Trees

Emergency tree works were recently undertaken in the

cemetery to ensure the safety of the public. As the trees continue to age, and due to the recurrent poor weather at the beginning of the year, it is likely that an arboreal inspection of all the trees the Parish Council is responsible for will take place later on in the year and we are currently obtaining quotes for this work.

### Flood Risk

Following the last meeting the Parish Council contacted Leicestershire County Council as the Lead Flood Authority. We were subsequently contacted by the Head of Cleansing and Open Spaces at Charnwood Borough Council who informed us that a high-water warning system is already installed on the grate to the culvert at the junction with Clay Street.

A process has now been set up whereby our Neighbourhood Watch will receive alerts if the water level rises and they will then be able to use their communication network to notify residents. If you are not already included in the network but would like to be please contact the Neighbourhood watch via email at [garryandangleboorman26@gmail.com](mailto:garryandangleboorman26@gmail.com).

### News from County and Borough Councillors

**Protection to verges:** We have now been granted a license for works to be progressed to install 'birds-mouth' fencing along the verges of Brook Street. We will keep you informed of any further updates!

### Sports Pavilion

All recreational cricket has been suspended until further notice. The current thinking is that this could be until late June at the earliest. We will keep you informed of any changes.

Once social distancing measures are eased, Wymeswold Sports Pavilion on Burton Lane will once again be available to hire for smaller groups or functions. If you would like further information about booking the pavilion later in the year or indeed for events in 2021; please contact the Parish Council at [wymeswoldpc@hotmail.co.uk](mailto:wymeswoldpc@hotmail.co.uk).

### Farmers Market

All being well, the farmers market is due to take place on 5<sup>th</sup> July 2020. This is obviously subject to change so do check back here for updates.

As always, if you need to contact the Parish Council, you can do so via email at [wymeswoldpc@hotmail.co.uk](mailto:wymeswoldpc@hotmail.co.uk).

*Stay safe everyone.  
Louise Turner  
Parish Clerk*

## REMPSTONE VILLAGE HALL

**Newly renovated, spacious, well fitted out and fully licensed hall for hire. Seating and crockery etc. for 110.**

**Competitive rates per hour**

**TO BOOK: [www.rempstonevillage.org.uk](http://www.rempstonevillage.org.uk)  
or contact 07758 464515 or email  
[rempstone\\_vh@hotmail.co.uk](mailto:rempstone_vh@hotmail.co.uk)**

# Wymeswold Community Volunteers

## DO YOU NEED HELP?

We are a group of residents of Wymeswold who are coming together to help in the community during a time where some people are experiencing difficulty in accessing what they need. We would like to support the community that we live in and ensure that nobody is left isolated or without what they need.

We can help with:

Urgent Supplies

Posting Mail

Dog Walks

Chats

Shopping

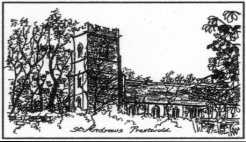
A friendly phone call

If you would like to speak to us or want to ask for help please email: [wymeswoldhelp@gmail.com](mailto:wymeswoldhelp@gmail.com) or call 07904 518 410

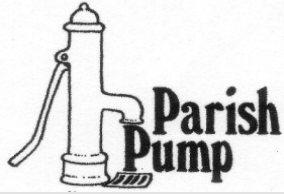
If you wish to join our team of volunteers please text 07904 518 410 or join our Facebook Group "Wymeswold In Need"

**PLEASE HELP SPREAD THE  
WORD TO OUR  
NEIGHBOURS IN NEED**





# News Burton Hoton Cotes Prestwold



## Hoton Parish Council

### Meetings

The ban on public gatherings led to new legislation allowing parish councils to meet 'remotely' and on 4<sup>th</sup> May Hoton Parish Council's first ever 'virtual' meeting was successfully held via the Zoom platform, when councillors were joined by members of the public and the county councillor. Meetings will be held in this format until rules on social distancing allow face-to-face meetings. You do not need access to the internet to 'attend' as it is possible to join by telephone.

The new legislation did not cover the annual parish meeting and this was postponed until gatherings of more than two people are permitted.

### Neighbourhood Plan

We are pleased to report that Charnwood Borough Council have issued a decision statement that the Wolds Villages Neighbourhood Plan may proceed to referendum. Unfortunately, the current 'lockdown' will prevent any referendum taking place in the near future, but this does mean that the plan can be given significant weight in decision-making when planning applications are determined. The referendum version of the plan will be available to view on our website in due course.

### Closure of the play equipment and tennis courts

The government has required, by law, that communal places within parks, such as playgrounds and tennis courts are closed to the public. This is to reduce social contact and because coronavirus (Covid-19) survives on surfaces. Please do not allow your child(ren) to use the play equipment at Hoton Playing Field.

The open spaces within Hoton Playing Field remain open for your daily exercise, but please adhere to the government's social-distancing guidelines.

### Telephone kiosk

The book share in the telephone kiosk has also been put out of bounds to prevent the spread of Covid-19. Visiting the kiosk is not an essential journey.

### Coronavirus information

The parish council website has a page dedicated to coronavirus information, including how to access help from the village support group. Go to <https://www.hotonparishcouncil.org.uk/coronavirus-covid-19-support-and.html>

### Garden waste and bonfires

Please be considerate and respect the needs of others and avoid burning garden waste if possible. People with respiratory problems are extremely vulnerable to the effect of smoke inhalation and requiring treatment for this puts them at risk of exposure to Covid-19. In addition, many residents are spending more time at home and the nuisance from bonfire smoke may prevent them from spending time in their gardens, which may be the only place where they can get exercise, relax or enjoy some fresh air.

The brown bin collections of garden waste have started again on a four-weekly cycle (the next is on Monday 18<sup>th</sup> May) and some of the County Council tips will open on the same day – the nearest ones to Hoton will be those at Mountsorrel and Melton Mowbray.

### Councillor vacancies

We have two vacancies for seats on the parish council so, if you would also like to be a 'voice' for your community, please do think about taking on this rewarding role. Contact the clerk or speak to one of the current councillors if you are interested; further details of what is involved can be found on our website.

### Police report

There were no crimes reported in either March or April.

### Next Parish Council Meeting

The date of the next meeting has not been set but details will be posted on the website at least three days in advance of the meeting. If you wish to be sent an agenda you should sign up to our mailing list at <https://www.hotonparishcouncil.org.uk/emailing-lists.html>. Residents are always welcome at our meetings; time is allocated for your questions or comments.

### Website

The parish council's website can be found at [www.hotonparishcouncil.org.uk](http://www.hotonparishcouncil.org.uk) and contains meeting agendas and minutes, current planning applications in Hoton, local news, playing field information and information on events at the Village Hall. You can also sign up to the parish council email mailing list to receive items of news and agendas for meetings.

*Hellen Jarvis – Clerk to Hoton Parish Council  
Tel: 01509 880596*

*Email: [hotonparishcouncil@googlemail.com](mailto:hotonparishcouncil@googlemail.com)*

*Website: [www.hotonparishcouncil.org.uk](http://www.hotonparishcouncil.org.uk)*

*Follow Hoton Parish Council on Twitter @HotonPC*

**JOHN HINDLEY  
BURTON ON THE WOLDS**

Pam, Andrew and David Hindley would like to express their sincere thanks for all the wonderful support, love and messages of sympathy they received on the passing of dear John.

*Pam Hindley*



# Rentokil

The Experts in Property Care

## Have you noticed damp, rot or woodworm in your property?

We can provide advice and specialist solutions for:

- Rising damp
- Penetrating damp
- Basement & structural waterproofing
- Cavity wall issues
- Structural repairs
- Wet & dry rot
- Woodworm



Rising Damp



Woodworm



Dry Rot



Wall Tie Issues



Get in touch to book a survey  
**01509 809 625**  
[rentokil.co.uk/property-care](http://rentokil.co.uk/property-care)

PROTECTING PROPERTIES FOR OVER 60 YEARS  
 LOCAL QUALIFIED SURVEYORS | DETAILED REPORTS  
 PCA MEMBER | LONG TERM GUARANTEES  
 WHICH? TRUSTED TRADER

## LINDA NORTH, BURTON ON THE WOLDS

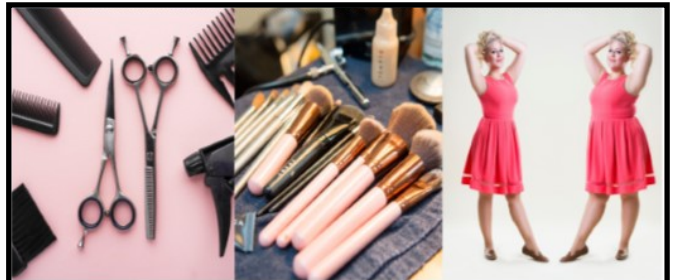
Linda North of Seymour Road Burton on the Wolds sadly died on the 23rd of April 2020 at the Leicester Royal Infirmary after a short illness.

She was a resident of Burton on the Wolds for many years and worked at the local garage for over 22 years. She will be greatly missed by family and friends and all who knew her. As you may know Linda always had a smile on her face and a cheery word for everyone.



Her funeral took place on the 19th of May at Loughborough Crematorium and a celebration of her life will take place when we can. There is a memorial fund being held at the garage for a bench in the village to remember Linda. If you would like to donate then there is a collection pot in the garage or ask for Emma.

*Paula North and family*



## Mobile Hairdresser

BASED IN WYMESWOLD  
 COVERING WYMESWOLD, REMPSTONE, BURTON ON THE WOLDS, COTES AND NEARBY VILLAGES

FOR APPOINTMENTS, PRICING AND ANY QUESTIONS  
 PLEASE CALL STACEY ON 07530 101 123

ADD ON SERVICES INCLUDE, GEL NAILS, EYEBROW SHAPING AND MAKE-UP/TUTORIALS

**THE 1:1 DIET**  
 by Cambridge Weight Plan

I'M A 1:1 CONSULTANT,  
 WOULD YOU LIKE TO  
 START YOUR WEIGHT  
 LOSS PLAN WITH ME,  
 JUST GIVE ME A CALL



FOLLOW ME ON FACEBOOK AND INSTAGRAM AT  
 'MY IMAGE OF YOU'







2a Hoton Road  
Wymeswold  
LE12 6UA  
Tel: 01509  
881513

NHS services  
available here



### Includes

- NHS prescriptions
- Repeat dispensing
- Electronic prescriptions
- Repeat management
- Medicines use review
- New medicines support
- Disposal of unwanted medicines
- Blood pressure monitoring

### OPENING TIMES

<b>Monday</b>	<b>9am to 5pm</b>
<b>Tuesday</b>	<b>9am to 5pm</b>
<b>Wednesday</b>	<b>9am to 5pm</b>
<b>Thursday</b>	<b>9am to 6.30pm</b>
<b>Friday</b>	<b>9am to 5pm</b>
<b>Saturday</b>	<b>9am to 12 noon</b>

## June

As we go in to June the uncertainty remains – we are coming out of lockdown but we have to be careful - possibly more than ever to prevent a second wave of infections, hospitalisations and deaths.

### FIRSTLY

Thanks to everyone for sticking with the rules - we have had a few confirmed cases and sadly one death but overall we have escaped the worst of the virus. We need to "stay alert" to prevent more cases and deaths and we look forward to being part of your efforts to protect our community.

### SECONDLY

We will be maintaining, or strengthening, our social distancing measures.

Only **ONE** person in the pharmacy at a time – the gazebo will now protect you from the sun (or summer rain) if you have to wait.

Please stay behind the barrier, don't come round the side - we prefer to see who we are talking to. We have the means to take contactless payments and our own patented reaching device to reduce the need to stretch.

### THIRDLY

We now have the ability to take card payments over the 'phone. This means that you can order and pay for medicines AND toiletries over the 'phone. Maybe a couple of days before they are delivered but you don't need to queue at the supermarket.

### FOURTHLY

We are reliant on volunteers for delivery of prescriptions and purchased items to isolating/shielding patients. As people go back to work the number of volunteers will go down. So if you need your prescriptions and non-prescription items delivered please :-

- Give us a few days notice – deliveries are generally scheduled for Thursday or Friday
- Don't be prescriptive about times
- Please give us a mobile number, if you have one – we aim to call before delivery
- And please keep your mobile with you; we call before delivery and if we can't contact you we can't deliver



# MARTIN TREE CARE

## Arboricultural Services

Established  
2001



TREES HEDGES

STUMPS

All TREE work undertaken by an  
**INSURED, QUALIFIED, EXPERIENCED**  
**LOCAL** tree specialist

*Clean tidy service all waste removed from site*

**Martin: 01509 21 24 21 Or 07970 314259**

**email: [martintreecare@btconnect.com](mailto:martintreecare@btconnect.com)**

*VE day Celebrations in the Wolds  
on Friday 7th May*



Burton on the Wolds



Pre-school Playgroup

**Burton on the Wolds Pre-school Playgroup offers a warm welcome to all children from two years old to school age.**

Based in Burton on the Wolds Village Hall on weekdays during term time.

Monday & Friday 9am – 12pm

Tuesday, Wednesday & Thursday 9am – 12pm, 9am – 1pm or 9am – 3pm

We aim to provide high quality care and education for children, enabling them to learn and develop in a fun and stimulating environment. We have a dedicated team of experienced and caring staff who will support your child as they take their first steps in education.

- Ofsted rated 'good'.
- Close links with Burton on the Wolds Primary School.
- For more information or to arrange a visit please call **07528 657859** or email **[botwplaygroup@gmail.com](mailto:botwplaygroup@gmail.com)**







Alice's  Tea Shop

A Warm Welcome awaits at our Traditional Tea Shop  
 At 4 Main Street, Keyworth  
 Tel. 0115 937 5352

Cooked Breakfasts	Afternoon Tea
Hot Drinks to takeaway	Home-made and locally sourced produce
Loose leaf teas	Gluten free options available
Selection of coffees	Free Wifi – work from Alice's
Light lunches	Private hire for Celebrations
Delicious Home-made Cakes	

Like us on Facebook or follow on Instagram  
 AlicesTeaShopKeyworth  
 Or contact us at [info@AlicesTeaShop.co.uk](mailto:info@AlicesTeaShop.co.uk)



Some of our waste sites will reopen from Monday 18 May, but to help stop the spread of coronavirus, sites will be operating differently to what you're used to.

#### Here's what you need to know...

- Only bring waste that could cause you injury or harm by storing it at home. If your waste can wait, please hold onto it, and use kerbside collections where possible.
- The sites at Barwell, Lount, Market Harborough, Melton Mowbray, Mountsorrel, Oadby and Whetstone will be open. They will operate 7 days a week.
- You must book a slot to bring your waste to a site. No booking means no entry to a site.
- We are accepting limited types of waste only, details on our website.
- Giving people set time slots will help us to make sure we can socially distance at our sites, and keep you and our staff safe.

If you need to bring something to a site please book yourself a time slot at: [www.leicestershire.gov.uk/waste-bookings](https://www.leicestershire.gov.uk/waste-bookings) or call 0116 305 0001.



## FOOT HEALTH PRACTITIONER

A Member of the Alliance of Private Sector Practitioners

**Wymeswold Pharmacy**  
Monday & Wednesday 9am – 5pm  
(last app. 4.30pm) – 01509 881513

Or Home Visiting Service

**Mobile 07814266011**



**ALISON MATTHEWS**

email: [walkonvelvet@hotmail.co.uk](mailto:walkonvelvet@hotmail.co.uk)  
DipCFHP, MPSPract

## General News

### Plans being finalized for re-opening of seven county waste sites

The county council is putting the finishing touches to its plans to re-open seven of its recycling and household waste sites next week.

The selected sites will open seven days a week to county residents - with a booked appointment only - from Monday, 18<sup>th</sup> May. They are at Barwell, Lount, Market Harborough, Melton Mowbray, Mountsorrel, Oadby and Whetstone. Seven other sites at Bottesford, Coalville, Loughborough, Lutterworth, Kibworth, Shepshed and Somerby remain closed for the time being.

From today (Thursday, 14<sup>th</sup>), an online booking system is also available by visiting <https://www.leicestershire.gov.uk/waste-bookings>

The council is anticipating there will be a high level of demand for bookings and is reassuring residents that more slots will be made available over the coming weeks.

People are being asked to only bring what they cannot safely store at home for the time being, or if they cannot wait for their kerbside collection services, many of which are being reinstated by district councils

Social distancing will be in operation at the sites, and plans will also include traffic management arrangements. There will be parking restrictions in place around the immediate vicinity of the waste sites.

There will also be restrictions on the type of items people will be able to bring to county locations - so some waste types will still have to wait.

Councillor Trevor Pendleton, county council cabinet member for waste disposal, said: "I want to thank residents for their support around the measures which the council has taken to date, and would welcome their continued support to ensure the arrangements we are putting in place can operate successfully.

"We want our sites to work as efficiently as they can, while prioritising the health and safety of residents and our staff, so I would ask for patience during the first few days of operation.

"Please don't visit our sites, unless waste is creating an issue at home that could cause injury or harm – and you will need a confirmed booking to be allowed on to the site."

For more updates, visit [www.leicestershire.gov.uk/waste](https://www.leicestershire.gov.uk/waste)

*Councillor Richard Shepherd*



# Borough Councillor Report

## Community & Business Support

- Loughborough Against Coronavirus now has 900 volunteers in collaboration with Charnwood Council & John Storer House in Loughborough. Over 2000 food parcels have been delivered and 350 "friendship" calls have been made to vulnerable people living on their own.
  - Brown bin collection of garden waste has restarted. The next one in the Wolds is scheduled for **Monday 16th June** (ie monthly) and 7 tips have now reopened in May, including Mountsorrel for Charnwood. Only certain waste is being accepted but it does include garden waste and you **need to book a slot**. If you turn up without booking, you will be turned away. See County website
  - There is a £5 refund on current brown bin subscription renewals due to loss of service & you can now take out a new subscription if you were not in the scheme before (see CBC website).
  - **Bonfires for garden waste are temporarily banned in order to protect residents with asthma or other respiratory problems.**
  - All councils will now have a Parish Council Liaison Officer who will lend support, including financial, to all Parish and Town Councils.
- CBC have given out over £20M in (non repayable) grants to local businesses** who pay business rates. These range from £10K to £25K. I would urge all businesses, however small, to apply (see website for Business Support Grants).

## Coronavirus Statistics

As far as I am aware there have been 2 deaths confirmed in our area from Covid 19 and one other unconfirmed death in the Wolds villages (which includes Rearsby and Cossington) but these figures are 2 weeks behind. This death rate is way below large towns or cities ie less than 1% per 100,000. See National Statistics Office website. In Leicester, Leicestershire and Rutland NHS Trust (LLR), up to 19 May, there were 2008 lab confirmed cases and sadly, 326 deaths in a population of 1.1 million people.

However, **this is not indicative of the rate of infection** as I am aware (as opposed to being in contact with) of quite a few suspected infections in the Wolds, which started before "lockdown" (eg in January or February) and after, so there is no room for complacency. One small choir, for example, in Bradford is quite sure they were infected early January, after one member's partner returned from Wuhan. As such, some "experts" predict that over 17million people may have already been infected in the UK, many with no symptoms or very mild ones.

Most of these suspected cases are not confirmed as testing was only being done in hospitals until end of April and tests at the moment (even at testing stations) can only detect if you currently have it, not if you have had it. No-one will know for sure until a reliable home test comes out for antibodies, possibly end of June. The Jenner Institute at Oxford University is leading the way for this antibody test and a potential vaccine, for which human trials have already started.

**Nearest testing centres for current suspected infections are Birstall or Nottingham. Book online.**

## Recovery Plan & easing of Lockdown

Led by government, we are already looking at how we come out of lockdown at the Borough Council. This will be in stages, like Spain & Italy. Queues and social distancing in shops is here to stay for some time.

The physical logistics of re-opening shops and the market in


Loughborough is not easy whilst applying safe distances. If queues are lengthy, they will just run into each other so maybe staggered opening times or days. There may be a trial food market in Loughborough at end of May, with limited stalls, to see how it runs. Outwoods is now open. Car parking is free. However, the idea of browsing around shops and having a coffee as a form of leisure, is definitely no longer a way of life for the time being!!

The annual fair in November is debatable this year, as is the Pantomime season, unless there is a vaccine.

The economic recovery plan for the Borough (due in June) will look at the next 2 - 3 years but some businesses will not survive, unfortunately.

**Any questions please email me at [jennybp54@aol.com](mailto:jennybp54@aol.com) or phone 01509 881428 or mob: 07854 869909**

*Cllr Jenny Bokor  
Borough Councillor for the Wolds  
Cabinet Member for Loughborough*




**Wymeswold Playgroup**

**Wymeswold Playgroup Offers Childcare & Preschool Education for Children Aged 2yrs to School Age**

We offer a safe and caring environment where children feel happy and relaxed. We encourage learning through play, art, music and a variety of other indoor and outdoor activities whilst following the Early Years Foundation Stage curriculum.

Run by experienced, qualified and dedicated staff who help children reach their full potential.

We offer very competitive rates and up to 15 hours free childcare for children 3 years plus. 2 year and 30 hour funding is also available where eligible.



For more information, to arrange a visit or to register for a place, please contact Carol on 07599059061 or email: [wymeswoldplaygroup@gmail.com](mailto:wymeswoldplaygroup@gmail.com)

We can also be found on Facebook

Charity Number: 1027215

<b>Ofsted Rated 'Good'</b>
<b>Funded Places Available</b>
<b>Large Outdoor Area</b>
<b>Monday to Thursday 9.15am - 12.15pm</b>
<b>Fridays 9.00am - 3pm</b>
<b>Term Time Only</b>
<b>Lunch Club till 1.15pm</b>
<b>Available on Mon, Tues &amp; Thurs</b>
<b>Close Links with Wymeswold Primary School</b>
<b>WYMESWOLD PLAYGROUP</b>
Memorial Hall Clay Street Wymeswold Loughborough Leicestershire LE12 6TY
Tel: 07599059061
<a href="mailto:wymeswoldplaygroup@gmail.com">wymeswoldplaygroup@gmail.com</a>

## Pet Sitting Service



Friendly, reliable Pet sitter/Dog walker available in Wymeswold and surrounding Villages.

I will look after your pets, in the comfort of your home, while you are at work, holiday or self isolating.

I am fully insured and have years of experience with various small pets including Cats, Dogs Chickens, Guinea pigs, Rabbits etc.

Prices start from £4.00 a visit.

**Please call Liz Gray on 01509 889513 or 07419841778 to discuss your requirements.**



### 1<sup>st</sup> Wolds Scout Group

#### **Scouting keeps going It's in challenging times that our kindness and courage matter most**

Things are tough at the moment, and it's likely that they will stay that way for a while longer. That's why our 'never give up' spirit is so important – we know that we will all rise to the challenges. We are certainly in challenging times and it is times like this that the importance of scouting comes to the forefront.

Scouting goes on – we have had virtual camps, fundraising by hiking to the moon, supported Duck Race weekend, joined in on VE Day, one of our Scouts, Edward, played his violin in the street when we were thanking the NHS, teddies with 1<sup>st</sup> Wolds neckers can be seen in house windows. Normal Scouting goes on with all sections keeping in touch with their Beavers, Cubs and Scouts. We will carry on with badge work at home such as Chef, DIY, music, technician etc.

Some of our Scouts have received their Personal Challenge badge for various successes like, courage, persistence, team leadership, fund raising, exceptional effort and overcoming difficult times.

We have also awarded some recent badge completions – Climbing, Community Impact, Local Knowledge, Emergency Aid and Hikes.

Corona has stopped us from starting back this term and our programme is on hold for a bit but we will be planning and ready for the day everything returns to 'normal'. We have postponed our AGM and a few other things. There are lots of activities on the Scout Association website for anyone, not just those in scouting, to use.

#### **Proposed new Beaver Section:**

The new Beaver Colony is on temporary hold but leader recruitment continues so that we will be ready to get it all going again.

#### **Beech Party**

I think at the time of writing that I may be a little over ambitious in hoping that our Beech Party on 6<sup>th</sup> July will be a celebration. Keep safe.

The Scout Promise comes in handy at this time for everyone.

**On my honour,  
I promise that I will to do my best  
to do my duty to God and to the Queen,  
to help other people and to keep the Scout Law**

#### **The Scout Law A Scout is to be:**

**Trusted, Loyal, friendly and considerate, courage in difficulties, makes good use of time, careful of possessions and property, has self-respect and respect for others.**

The old poem that went with that was;  
'Trusty, loyal, helpful, brotherly, courteous, kind,  
obedient, smiling, thrifty, clean in thought word and  
mind'.

**A SCOUT'S DUTY IS TO BE USEFUL AND TO HELP  
OTHERS. Especially at these times**

#### **The 1<sup>st</sup> Wolds Section Leaders:**

**Group Scout Leader & Scout Leader:  
Peter Blount 01509 889692**

**Beavers:  
Beaver Leaders:  
David Bradshaw/Mandy Hickling  
David:07879 846812 Mandy:07709784118**

**Cub Scouts:  
Cub Scout Leader: Shaun Black 01509 880438**

**Scouts:  
Scout Leader: Peter Blount 01509 889692**

*Peter Blount*

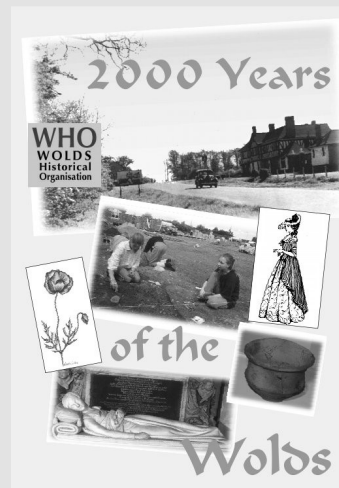
The linked talk and walk scheduled as the WHO's June and July meetings have been postponed until next year. All being well we will resume meetings on Tuesday 15th September.



In the meantime I have been preparing digital versions of five booklets written and originally published by the late David Lazell, the historian based in East Leake who wrote about a surprising variety of topics. These booklets include *Sir Julien Kahn at Stanford Hall and a View from the Co-operative College* – written when the Co-op were still using the Hall and long before the recent conversion to the DNRC.

Also new online is a PDF version of the WHO's booklet *2000 Years of the Wolds*, published in 2003. Even if you own a copy do reacquaint yourself with the new version as, where possible, the original colour photographs have been substituted for the black-and-white versions in the printed copies.

Links to these and many other PDFs of local interest (and some YouTube videos too) are on the WHO's website: [www.hoap.co.uk/who/](http://www.hoap.co.uk/who/)



Stay safe and very best wishes

*Bob Trubshaw  
Chair, Wolds Historical Organisation  
01509 881342  
bobtrubs@indigogroup.co.uk*



# Dave Noble's

## New Shop Location in Wymeswold Village

Ski / Snowboard / Wintersports and Cycle Sales / Repairs and Servicing.

Shop attached to our wholesale warehouse which is open to the public.

### Bikes and accessories

Skis

Snowboards

Boots

Bindings

Impact Protection

Helmets

Bags

Wax and Tuning

Clothing

And much much more!



Custom House - Hillside Farm  
Rempstone Road  
Wymeswold  
Loughborough, Leics  
LE12 6UE  
Tel: 01509 881111  
www.nobleboards.co.uk  
info@nobleboards.co.uk

## Burton on the Wolds Tennis Club

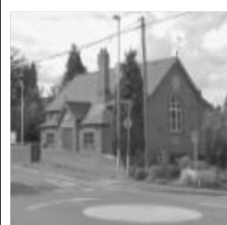
Period	Monday	Tuesday	Wednesday	Thursday	Friday	Saturday	Sunday
9.00 – 13.00	club	public	club	club	club	public	club
13.00 – 15.00	public	club	public	club	public	Coaching 2.30pm to 4.30pm	club
15.00 - dusk	club	coaching	public	Club	club	Club 4.30pm on	public

### Timetable for tennis courts.

To book a court during public time please contact Pam or Peter Harrison on 01509 880058. Please note Monday and Friday public times maybe used by BOW school and occasional Wednesdays so please check.

The key for court is available from Pam and Peter at 51, Barrow Road, Burton on the Wolds.

Cost is £4 per court per hour for adults and £2 an hour for under 16 years to hire. To join the club go to [www.burtontennis.org.uk](http://www.burtontennis.org.uk)



## Hire Burton on the Wolds Village Hall

To book please contact

[BOTWVillageHall@gmail.com](mailto:BOTWVillageHall@gmail.com)  
Or telephone 07421307029



## Diary Dates

### September

Sun 6th Hoton Village Show  
Sat 26th Wymeswold Church Appeal Curry and Quiz

### December

Fri 4th Hoton Christmas Light switch on  
Sat 5th Christmas Coffee morning, 10.30-noon at Walton Village Hall  
Thurs 17th Carols by Candlelight at Hoton Village Hall

**Please note many of the above dates may be cancelled due to COVID-19. Please check with the organisers.**

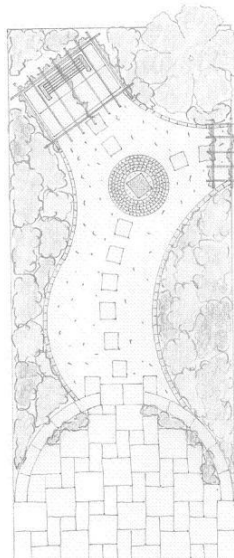


For all your Garden Requirements

Tel : 01509 416445  
07748635095

Complete Landscape Service :

- Garden Designs
- Patios
- Decking
- Ponds
- Water Features
- Pergolas
- Fencing
- Turfing
- Planting Schemes
- Block Paved Driveways
- Brick and Stone walling
- Garden Maintenance

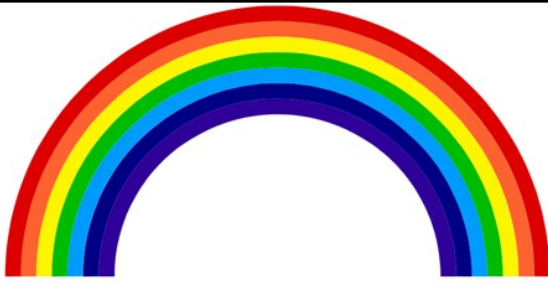


Free Quotations

Website: [www.barrowlandscapes.co.uk](http://www.barrowlandscapes.co.uk)

Thank you  
**NHS**  
and all Key Workers





## Burton on the Wolds Baby and Toddler Group

Burton on the Wolds Village Hall

Mondays 2pm – 3.30pm during term time

A stay and play group for children from birth to school age

Play, craft and snack

Come and meet other parents and children

£2.50 per family

Everyone welcome

For more details contact Melissa (07538 201463)



## Guiding in

**Rainbows – aged 5 -7**

Contact: Vera Williams

01509 880996

**Brownies – aged 7-10**

Contact: Karen Dilks

01509 880803

**Guides – aged 10 – 14**

Contact: Vera Williams

01509 880996

## Wymeswold and Wolds Villages



### **Roman Catholic Services: East Leake & Keyworth:**

Father Michael (Parish Priest), Our Lady of the Angels, Main Street, East Leake (01509 852147).

[www.grasshopper-hosting.co.uk/eastleakeandkeyworth/04\\_MassTimes/MassTimes.html](http://www.grasshopper-hosting.co.uk/eastleakeandkeyworth/04_MassTimes/MassTimes.html)

**Saturdays:** 6pm (Vigil Mass of Sunday) Our Lady of the Angels, Main Street, East Leake.

**Sundays:** 9am St Margaret Clitherow, Willow Brook, Keyworth. **Sundays:** 11am Our Lady of the Angels, Main Street, East Leake.

### **Anglican**

St Mary's Wymeswold Churchwarden: Michael Henshaw (880218). Assistant Church Wardens: Chris Keeling and Elizabeth Tingle  
Verger for St Mary's: (See voluntary list inside the church)

St Mary's, Walton Churchwarden: see voluntary list inside church

St Andrew's Prestwold Churchwarden: see voluntary list inside church

### **Methodist**

Rev John Pugh, 18 Kingfisher Road, Mountsorrel, LE12 7FG (01162304689) Day Off: Saturday

Superintendent Minister: Rev Andrew Lomax, Logos House, 23 Lemontree Lane, Loughborough, LE11 2QS (01509219804) Day Off: Monday

Circuit Administrator: Mrs Josephine Wills, c/o Trinity Methodist Church Centre, Royland Road, Loughborough: (01509807441)

Office hrs: Mon, Tues, Thur, Fri 10am to 2pm [loughboroughmethodist@gmail.com](mailto:loughboroughmethodist@gmail.com)

Church Stewards: Margaret Folwell (880770).

### **Barrow Baptist Church**

Minister: Rev Ben Haldane, Beveridge Street, Barrow upon Soar 01509 416603 [administrator@barrowbaptist.org.uk](mailto:administrator@barrowbaptist.org.uk)

Services are held at 10am on Sunday mornings. There are various mid-week groups for all ages, please contact us for more information.

### **Barrow & Wolds Group of Churches**

Priest in charge Rev'd Clive R Watts

T: 07534 899522

E: [rev.clive.watts@barrowandwoldsgroup.com](mailto:rev.clive.watts@barrowandwoldsgroup.com)

A: The Rectory, 27 Cotes Road, Barrow-upon-Soar, LE12 8JP

W: [www.barrowandwoldsgroup.com](http://www.barrowandwoldsgroup.com)





## SIX ACRE NURSERIES GARDEN CENTRE GARDEN DELI & COFFEE SHOP

Conveniently located on the A60 just outside Loughborough.  
We are an independent, family-run, horticultural nursery.



You will find everything you need at our nursery;

- Perennials - Climbers - Heathers - Roses - Fruit trees -
- Ornamental Trees - Fruit and Vegetables - Hedging Plants -
- Seasonal Bedding Plants - Pots and Sundries -

Visit our  
**GARDEN DELI & COFFEE SHOP**  
for a wide range of delicious food and drink

Phone:  
01509 856079  
Opening Times  
Monday - Saturday 9am to 5pm  
Sunday & Bank Holidays 10am to 4pm  
Garden Deli & Coffee Shop closed Mondays

Six Acre Nurseries  
Loughborough Road  
Costock  
Loughborough  
Leicestershire  
LE12 6XB

# HA&W

HunterAitkenhead&Walker  
CHARTERED FINANCIAL PLANNERS



## We are Chartered Financial Planners

Helping people in Leicestershire achieve their financial objectives.  
We are retirement experts. If you are considering your retirement options, or have questions about pensions, we'd be happy to help.



Our website is regularly updated with personal finance news.

You can browse the articles by visiting: [www.ha-w.co.uk/news](http://www.ha-w.co.uk/news)



Contact us:

4 Brook Park,  
Gaddesby Lane,  
Rearsby, LE7 4ZB

01664 778 899  
info@ha-w.co.uk  
www.ha-w.co.uk

Hunter Aitkenhead & Walker Ltd is authorised and regulated by the Financial Conduct Authority.



## STEPHEN MORRIS LANDSCAPES Ltd

We offer a full range of domestic garden landscaping solutions for both large and small projects including -

- Paving
- Block Paving
- Garden Walls
- Lawns & Planting
- Decks & Pergolas
- Garden Designs



01509 889746  
or  
07920 260706

[www.stephenmorrislandscapes.co.uk](http://www.stephenmorrislandscapes.co.uk)



# Wolds Garden services

Garden Maintenance

Soft Landscaping

Turfing

Patios & Fencing

Free quotes & advice call Kevin Lewin

## Tel 01949 81231



**COLLECTIONS ON SATURDAY\***  
(DELIVERIES TO VULNERABLE GROUPS IN THE VILLAGE IF POSSIBLE)  
MINIMUM SPEND £17

**HOW TO ORDER?**

1. CHOOSE WHAT YOU FANCY FROM THE OPTIONS BELOW
2. CALL 01509 881313 BETWEEN 12-3PM ON WEDNESDAY OR THURSDAY TO ORDER, PAY OVER THE PHONE AND CHOOSE A TIME SLOT
3. COLLECTION WILL BE FROM THE FRONT DOOR IN YOUR TIME SLOT FROM 11AM. THIS WILL ALLOW SOCIAL DISTANCING FOR SAFETY OF YOURSELVES AND OUR TEAM MEMBER.
4. FOOD IS PACKED IN PLASTIC CRATES AND CAN BE QUITE HEAVY.

PLEASE BRING YOUR 'BAGS FOR LIFE' WITH YOU OR PLEASE RETURN THE CRATE TO THE PUB

<p><b>-MEAT BOX -</b> £36</p> <p>1.5kg Whole Chicken 1kg Minced beef 1kg Stewing Steak 1kg Lincolnshire sausages 2 x minute steaks (oz) 1kg streaky bacon</p> <p><b>'PIMP YOUR MEAT BOX'</b> Add</p> <p>9oz Sirloin (oz day aged Hereford) for 1/2 £8/11 10oz British Barnsley lamb chops £5/9 20oz bone on sirloin £10/19 16oz Chateaubriand (oz day aged Hereford) £20/38 2kg shoulder of lamb £15</p>	<p><b>- FRUIT &amp; VEG BOX -</b> £25</p> <p>2 x kg potatoes 4 x cooking onions 1kg wonky carrots 1 x large leek 1 x baby swede 1 x hispi cabbage 1 x garlic bulb 12oz mixed leaf salad 1 x baby gem 4 x flat cap mushrooms 4 x tomatoes 4 x satsumas 4 x apples 4 x bananas 1 x lemon &amp; 1 x lime (for your gin?)</p> <p><b>ADD SOME MEAT?</b></p> <p>1.5kg Whole Chicken £9 1kg Minced beef £9 1kg Stewing Steak £9 1kg Lincolnshire sausages £10 1kg streaky bacon £9 for 1/2</p> <p>10oz British Barnsley lamb chops £5/9 4oz minute steak (oz day aged Hereford) £4/7 9oz Sirloin (oz day aged Hereford) £6/11 20oz bone on sirloin (oz day aged Hereford) £10/19 16oz Chateaubriand (oz day aged Hereford) £20/38</p>	<p><b>- EXTRAS -</b> per item</p> <p>sliced fresh bread (white or brown) £2.75 4 pints of fresh British milk* £2.00 6 hen eggs £1.75 a tray of eggs (30) £8.00 250g butter £2.50 250g baking butter (vegan) £1.50 1.5kg bread flour £2.75 1.5kg self raising flour £2.75 4 pack of toilet roll £2.00 500g fresh yeast £3.50 cucumber £1.10 green pepper £1.00 200g mature cheddar £2.00 500g penne pasta £2.50 3kg penne pasta £10.00 1kg granulated sugar £1.35</p>
<p><b>-SUNDAY LUNCH BOX -</b> £24 (includes 1/2 veg)</p> <p>1.5kg Chicken £17 1kg Pork Loin £17 2kg shoulder of lamb £21 1kg Striploin (oz day aged Hereford) £24 2 x 16oz Chateaubriand (oz day aged Hereford) £40 all served with potatoes, carrots and a hispi cabbage*</p> <p>*All to be cooked by yourselves at home. All meats are approx uncooked weights</p>	<p><b>- WINE -</b></p> <p>We also have wine and other drinks available for purchase. Please ask when you're ringing your order through.</p>	

OUR BOXES WILL BE PACKED/DELIVERED USING DISPOSABLE GLOVES AND SANITISER WILL BE PROVIDED AT COLLECTION  
All food is from our local suppliers. The Veg Factor, Ray Camplejohn in Syston. All Purpose. Some items may be substituted due to availability.  
Prices and availability of some products are very likely to change over the coming weeks  
#shoplocal #dontleavetheVillage #besafe

**ALEX'S TAXI**



*Friendly and reliable Service*

*Long or short Journeys*

**Please call 07473557180  
01509 733903**

**ArtsWeb**

**Photography**

- Portraits
- Weddings
- Social
- Photo Restoration
- Videos & DVDs

**Phil Hutchinson  
01509 881500**



36a Sowters Lane, Burton on the Wolds,  
Loughborough, Leicestershire, LE12 5AL

**T.01509 881596**

**Any Make & Model Repaired**

**Mechanical Repairs**

**Full Servicing**

**Free Quotations**

**Welding**

**M.O.Ts for Cars & Light Vans**

Collection Service Available

**HAMMER & PINCERS**  
W Y M E S W O L D  
MORE THAN JUST A RESTAURANT

**Lunch**

Tuesday to Saturday 12 till 2

Set menu now Set 3 course menu £29

Sunday Lunch now 3 courses for £32

**Dinner**

Tuesday to Saturday 6 till 9

7 Course Grazing menu From £50

Saturday Night Grazing From £65

01509 880735

5 East Road, LE12 6ST